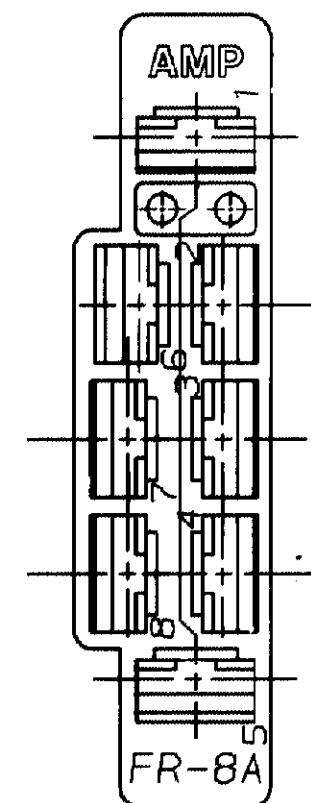
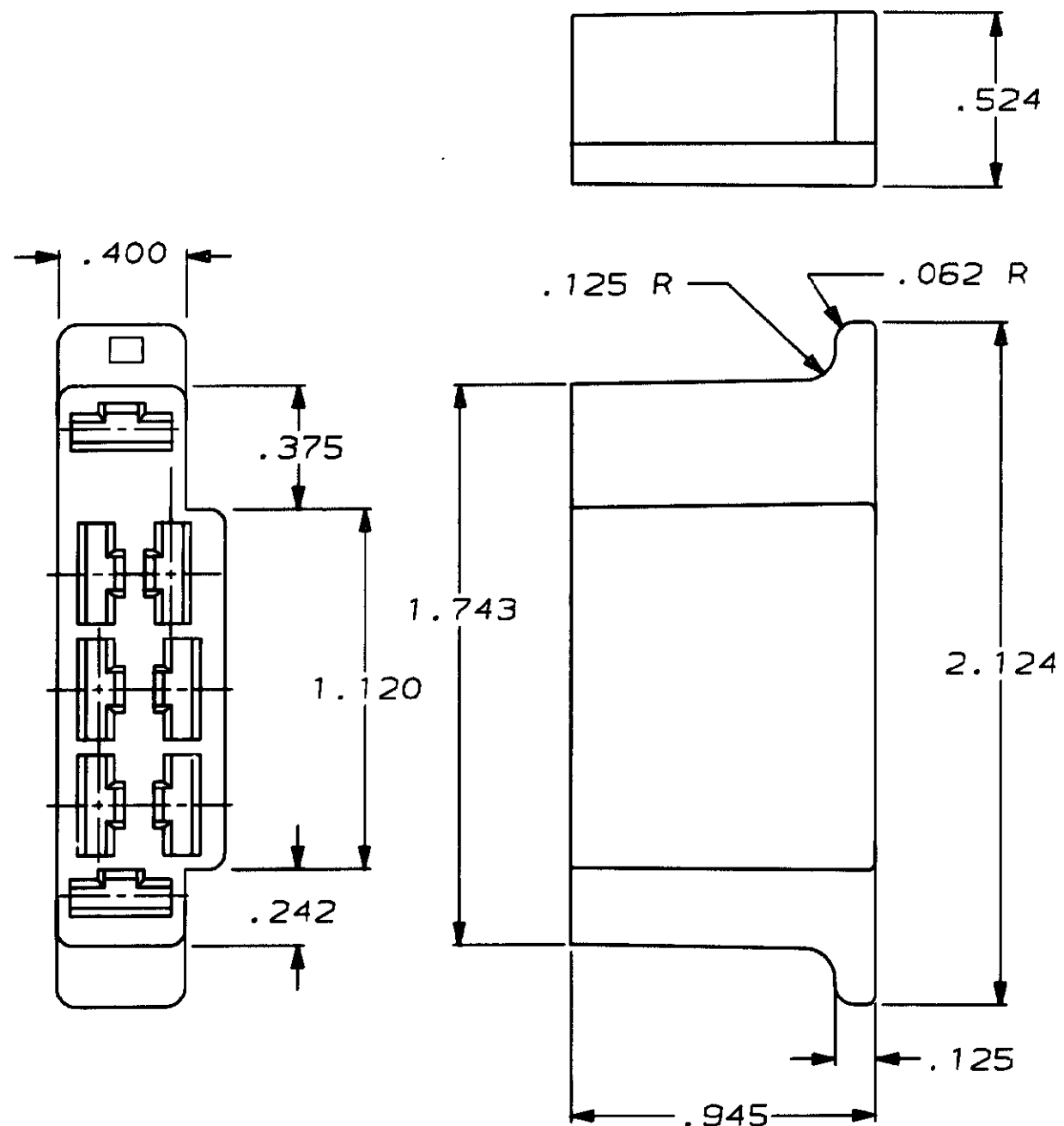


THIS DRAWING IS UNPUBLISHED. RELEASED FOR PUBLICATION ,19 .
 © COPYRIGHT 19 BY AMP INCORPORATED. ALL INTERNATIONAL RIGHTS RESERVED.

LOC	DIST	P	F	ZONE	LTR	REVISIONS	DATE	APPD
AF	50				J	REDRAWN AF-7181	2/4/91	JR/P

1 CAVITIES ARE IDENTICAL IN THE FOLLOWING GROUPS; 1,2,3,4,7 & 8 ACCOMODATE .160 MAX INSUL. DIAMETER. CAVITIES 5 & 6 ACCOMODATE .190 MAX INSUL. DIA.



480173-1
PART NO

C NOT SCALE PRINT. UNLESS SPECIFIED DIMENSIONS IN mm (INCHES) TOLERANCES ON: 2 PLC DEC ± - 3 PLC DEC ± .015 ANGLES ± -	DR 2/5/91 JR RUTH	AMP AMP Incorporated Harrisburg, PA 17105-3608
	CHK 2/5/91 P FORTNEY	
	APPD 2/5/91 J GILLESPIE	
	APPD 2/5/91 D REINER	
MATERIAL 6/6 NYLON	PRODUCT SPEC -	NAME HOUSING, RECEPTACLE, FASTIN-FASTON, .250 SERIES
FINISH NATURAL	APPLICATION SPEC -	SIZE B
	WEIGHT -	CAGE CODE 00779
		DRAWING NO 480173
		SCALE 2:1
		SHEET 1 OF 1