



New Product Announcement

NIS5135

3.6A 5V Resettable Electronic Fuse

The NIS5135 is a self-protected resettable electronic fuse designed for consumer applications such as hard-disk drives to industrial applications to enhance system reliability against catastrophic and shutdown failures.

To support a wide range of demanding applications, the design has been optimized to operate over the supply range of 3.1V to 18V.

For robustness and protection, the device integrates a low $R_{DS(on)}$ NMOS buffer power device along with an undervoltage lockout, overvoltage clamp, current limit, dv/dt control and thermal shutdown circuits.

Thermal shutdown can be either latching type (NIS5135MN1) or auto-retry type (NIS5135MN2).



The Diodes' Advantage

- **Integrated NMOS Power Device with $R_{DS(on)}$ of 30m Ω Typical**
Decreases voltage drop and power losses
- **Protection**
 - Overcurrent
 - Overvoltage
 - Current Limit
 - Thermal ShutdownImproves robustness of circuit and prevents **premature** failure
- **Standard DFN3030-10 Thermal Enhanced Package**
 - User-Friendly Pitch, 0.5mm
 - High-Spacing Efficiency
 - Excellent Power Dissipation

Applications

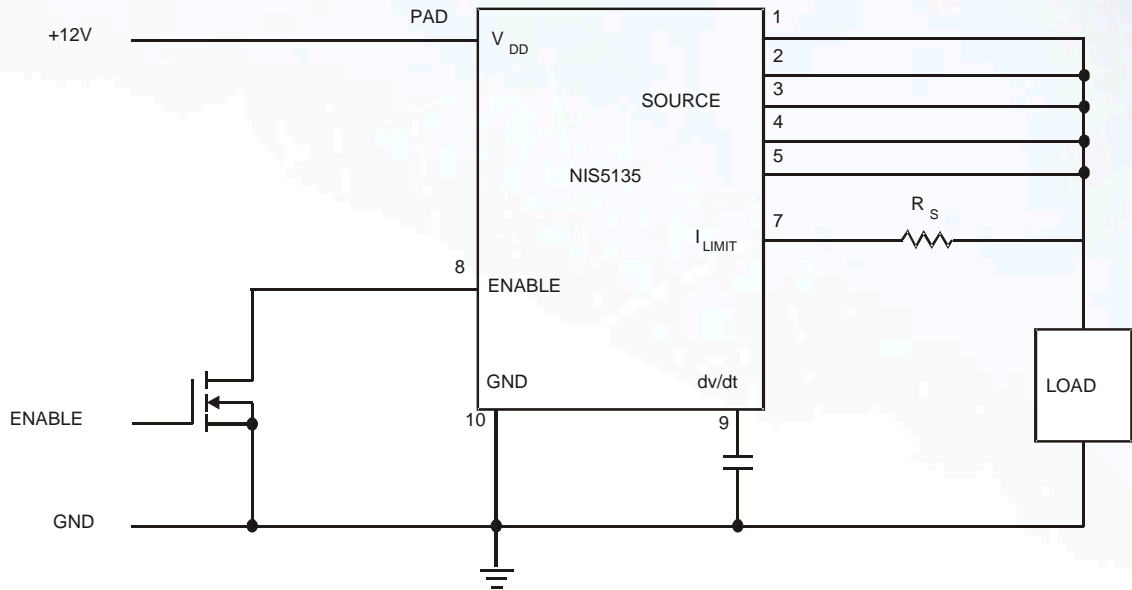
- HDD SSD
- Printers
- Mother Boards
- Network Systems



New Product Announcement

NIS5135

Typical Application Circuit



Ordering Information

Device	Packaging	Reel Size	Quantity
NIS5135MN2-FN-7	U-DFN3030-10	7"	3,000
NIS5135MN1-FN-7	U-DFN3030-10	7"	3,000

To find out more information:

Datasheet <http://www.diodes.com/datasheets/NIS5135.pdf>